

Industrial Cellular Product Guide



A Message from the President

*"As we brought Red Lion®, N-Tron® and Sixnet® together,
we have become a better company, not just a bigger one."*

Mike Granby
President, Red Lion Controls



Please allow me to start by saying thank you to the thousands of customers all over the world who place their trust in the products and reputation of Red Lion, N-Tron and Sixnet. We appreciate your business and look forward to serving you at even higher levels in the future.

We have recently gone through some exciting changes, merging N-Tron and Sixnet together into a bigger, better Red Lion. Each company had its own legacy and its own strengths, and together we now offer an industry-leading portfolio of industrial automation and networking products. The long and trusted history of Red Lion and Sixnet in the automation market is a perfect complement to N-Tron's mastery of industrial networking, and to Sixnet's recent developments in the fields of cellular and machine-to-machine communications.

As we brought Red Lion, N-Tron and Sixnet together, we have become a better company, not just a bigger one. We recognize that you, the customer, is what matters, and that any merger only makes sense if it is able to put better solutions and products in your hands. We are dedicated to being your global experts in communication, monitoring and control for industrial automation and networking—and to doing so with the exceptional levels of service for which Red Lion is well known.

Over the last year, we have launched a bigger and better product portfolio. In addition to the panel meters, HMIs and other industrial automation products that Red Lion customers have always trusted, we now offer a broad selection of communication technologies, ranging from industrial Ethernet, through Wi-Fi to complete cellular M2M solutions.

The end result? A comprehensive set of products that enables you to connect, monitor and control anything. From one device to a thousand devices. Connecting serially, via Ethernet, or over high-speed wireless networks. Speaking one protocol, or hundreds of protocols. On a single machine, across your factory, or spanning multiple sites all over the globe.

Thank you again, and we look forward to further supporting you as we continue our journey as one unified Red Lion.

A handwritten signature in black ink, appearing to read "Mike Granby". The signature is stylized and fluid, with a long, sweeping underline that extends to the right.



Table of Contents

Industrial Cellular Solutions

- 4 Cellular RTUs
- 5 Cellular Routers

Accessories

- 6 Cellular Accessories

Cellular M2M Solutions

Red Lion offers a broad range of cellular M2M RTUs and routers that feature standards-based, enterprise-class functionality to enable secure, reliable cellular data access – anywhere, anytime. These rugged industrial solutions provide the ability to remotely monitor sites across a range of applications.



RAM® 9000 Industrial Cellular RTUs

- > High-density I/O reduces need for external equipment
- > Multi-carrier operation in a single device
- > Built-in active GPS mobile for semi-mobile applications
- > Secure, reliable Modbus concentrator for remote site monitoring
- > Event Engine that can send SMS messages or control I/O based upon operational data

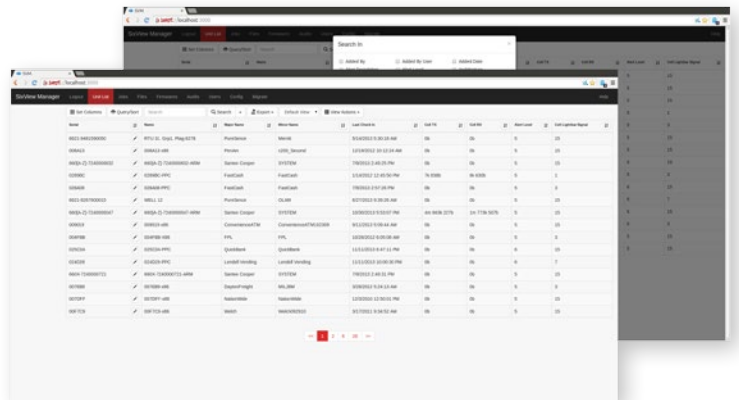


| MODEL NUMBER | SERIAL | | ETHERNET | WI-FI | GPS | CELLULAR | MULTI-CARRIER | DEFAULT CARRIER |
|----------------------------|--------|--------|---------------|-------|-----|----------|---------------|---------------------------------------------------------|
| | RS-232 | RS-485 | 10/100 COPPER | | | | | |
| RAM-9911-(Default Carrier) | 1 | 1 | 2 (LAN/WAN) | N | Y | 4G LTE | Y | AT (AT&T); VZ (Verizon); AM (Generic); EU (Europe/Asia) |
| RAM-9931-(Default Carrier) | 1 | 1 | 2 (LAN/WAN) | Y | Y | 4G LTE | Y | |

AM (Generic) model includes Bell Mobility, TELUS and Rogers carriers or other North American carriers. EU (Europe) model is not supported in North America.

SixView Manager®

This remote device management software is designed to increase productivity and reduce cost for organizations using Sixnet series cellular RTUs and routers. A web-based console and customized dashboard provide users the ability to remotely access, configure and manage critical device information for several, even thousands of RAM cellular RTUs and IndustrialPro® cellular routers from a central location.



RAM 6000 Industrial Cellular RTUs

- > Supports 4G LTE with fallback to 3G
- > LTE multi-carrier operation in single device
- > Real-time access to mission-critical data through built-in Modbus gateway
- > Split WAN/LAN on multi-Ethernet port models
- > Fully configurable router with firewall
- > Event Engine can trigger I/O or send SMS messages
- > Optional PoE Powered Device (PD) support



| | MODEL NUMBER | RS-232 | 10/100 COPPER | POWER CONNECTOR | GPS | CELLULAR | MULTI CARRIER | DEFAULT CARRIER |
|-------------|---------------------------|--------|---------------|-----------------|-----|----------|---------------|------------------------------------------------------------------------------------------------|
| 69XX | RAM-6900-(Carrier Code) | 1 | 1 | Molex | Y | 4G LTE | Y | (AT) AT&T; (VZ) Verizon; (AM) Generic; (EU) Europe/Asia |
| | RAM-6901-(Carrier Code) | 1 | 1 | DC powered | Y | 4G LTE | Y | |
| | RAM-6921-(Carrier Code) | 1 | 5 | DC powered | Y | 4G LTE | Y | |
| | RAM-6901EB-(Carrier Code) | 1 | 1 | PoE | Y | 4G LTE | Y | |
| 66XX | RAM-6600-(Carrier Code) | 1 | 1 | Molex | N | 3G/CDMA | N | (SP) Sprint; (VZ) Verizon |
| | RAM-6601-(Carrier Code) | 1 | 1 | DC powered | N | 3G/CDMA | N | |
| | RAM-6601EB-(Carrier Code) | 1 | 1 | PoE | N | 3G/CDMA | N | |
| 68XX | RAM-6800-(Carrier Code) | 1 | 1 | Molex | N | 3G/GSM | N | (AT) AT&T; (BM) Bell Mobility; (GE) Generic*; (MTS) Manitoba; (RO) Rogers; (TE) TELUS |
| | RAM-6801-(Carrier Code) | 1 | 1 | DC powered | N | 3G/GSM | N | |
| | RAM-6801EB-(Carrier Code) | 1 | 1 | PoE | N | 3G/GSM | N | |
| | RAM-6821-(Carrier Code) | 1 | 5 | DC powered | N | 3G/GSM | N | |

AM (Generic) model includes Bell Mobility, TELUS and Rogers carriers or other North American carriers.
EU (Europe) model is not supported in North America.

IndustrialPro SN 6000 Cellular Routers

- > Supports 4G LTE with fallback to 3G
- > LTE multi-carrier operation in a single device
- > Rugged, compact industrial design
- > Secure Out-of-Band Management (OOBM) solution for remote assets
- > Fully configurable router with firewall



| | MODEL NUMBER | RS-232 | 10/100 COPPER | POWER CONNECTOR | GPS | CELLULAR | MULTI CARRIER | DEFAULT CARRIER |
|-------------|--------------------------|--------|---------------|-----------------|-----|----------|---------------|------------------------------------------------------------------------------------------------|
| 69XX | SN-6900-(Carrier Code) | 1 | 1 | Molex | N | 4G LTE | Y | (AT) AT&T; (VZ) Verizon; (AM) Generic |
| | SN-6901-(Carrier Code) | 1 | 1 | DC powered | N | 4G LTE | Y | |
| | SN-6921-(Carrier Code) | 1 | 5 | DC powered | N | 4G LTE | Y | |
| | SN-6901EB-(Carrier Code) | 1 | 1 | PoE | N | 4G LTE | Y | |
| 66XX | SN-6600-(Carrier Code) | 1 | 1 | Molex | N | 3G/CDMA | N | (SP) Sprint; (VZ) Verizon |
| | SN-6601-(Carrier Code) | 1 | 1 | DC powered | N | 3G/CDMA | N | |
| | SN-6601EB-(Carrier Code) | 1 | 1 | PoE | N | 3G/CDMA | N | |
| 68XX | SN-6800-(Carrier Code) | 1 | 1 | Molex | N | 3G/GSM | N | (AT) AT&T; (BM) Bell Mobility; (GE) Generic*; (MTS) Manitoba; (RO) Rogers; (TE) TELUS |
| | SN-6801-(Carrier Code) | 1 | 1 | DC powered | N | 3G/GSM | N | |
| | SN-6801EB-(Carrier Code) | 1 | 1 | PoE | N | 3G/GSM | N | |
| | SN-6821-(Carrier Code) | 1 | 5 | DC powered | N | 3G/GSM | N | |

AM (Generic) model includes Bell Mobility, TELUS and Rogers carriers or other North American carriers.

Accessories

3G Antennas

- > Support for 3G and 2G cellular frequencies
- > Mounting options include magnetic or bolt-through options
- > Available with GPS and/or Wi-Fi built-in
- > Two antennas recommended for optimal performance



| MODEL NUMBER | DESCRIPTION | CONNECTOR & CABLE TYPE | WHERE USED |
|-----------------|-----------------------------------------------------------------------|-------------------------------------------------------------------------|-----------------------------|
| ANT-TG090113 | 2G/3G 3" hinged antenna | SMA male, no cable | SN 6000, RAM 6000, RAM 9000 |
| ANT-GA107201111 | 2G/3G 4.5" whip magnetic mount antenna, IP65 rated | SMA male, RG-174 (2 meter) | SN 6000, RAM 6000, RAM 9000 |
| ANT-G21B301111 | 2G/3G low profile direct permanent mount antenna, IP65 rated | SMA male, RG-174 (3 meter) | SN 6000, RAM 6000, RAM 9000 |
| ANT-MA301AAB001 | 2G/3G plus GPS, low profile magnetic mount antenna, IP67 rated | (2) SMA male, RG-174 (3 meter) | RAM 9000 |
| ANT-MA104CAB015 | 2G/3G plus GPS, low profile direct permanent mount, IP67 rated | (2) SMA male, RG-174 (3 meter) both cables | RAM 9000 |
| ANT-MA520ABC008 | 2G/3G low profile direct permanent mount, dual band Wi-Fi, IP67 rated | SMA male - cellular and RPSMA male - Wi-Fi both cables RG-316 (2 meter) | RAM 9000 |

4G Antennas

- > Support for 4G LTE, 3G and 2G cellular frequencies
- > Mounting options include direct, magnetic or bolt-through options
- > Available with built-in GPS and/or Wi-Fi
- > MIMO configuration requires two antennas for optimal performance



| MODEL NUMBER | DESCRIPTION | CONNECTOR & CABLE TYPE | WHERE USED |
|-------------------|------------------------------------------------------------------------------------|-------------------------------------------------------------------------------------------------------------------|-----------------------------|
| FANWAND721SMA | 2G/3G/4G LTE paddle antenna | SMA male, no cable | SN 6000, RAM 6000, RAM 9000 |
| ANT-GA110101111 | 2G/3G/4G LTE 13" whip antenna, IP65 rated | SMA male, RG-174 (1 meter) | SN 6000, RAM 6000, RAM 9000 |
| ANT-G30B108111 | 2G/3G/4G LTE low profile direct permanent mount antenna, IP67 rated | SMA male, RG-316 (1 meter) | SN-6, RAM 6000, RAM 9000 |
| ANT-MA741ABI001 | 2G/3G/4G LTE MIMO direct permanent mount antenna, IP67 rated | LTE + Cell (both lines) SMA male, CFD-200 Low loss cable (3 meters) | SN-67XX, RAM-67XX, RAM 9000 |
| ANT-MA710AABI001 | 2G/3G/4G LTE MIMO plus GPS direct permanent mount antenna, IP67 rated | LTE and cellular (both lines) have SMA male; CFD-200 low loss cable (3 meters) GPS has SMA male RG-174 (3 meters) | RAM 9000 |
| ANT-MA760AABIC003 | 2G/3G/4G LTE MIMO plus GPS and dual band Wi-Fi permanent mount antenna, IP67 rated | LTE and cellular (both lines) have SMA male; CFD-200 low loss cable (3 meters) GPS has SMA male RG-174 (3 meters) | RAM 9000 |

Cellular Wi-Fi Antennas

- > 2.4 GHz band Wi-Fi
- > RPSMA male antenna connector
- > Small size for tight spaces
- > High-gain models for longer distance connectivity



| MODEL NUMBER | DESCRIPTION | CONNECTOR & CABLE TYPE | WHERE USED |
|--------------|-------------------------------------------------------|------------------------|------------|
| ANT-GW11A153 | Wi-Fi antenna, standard 2 dBi WLAN 2.4 GHz, 4" hinged | RPSMA male, no cable | RAM 9000 |
| ANT-GW260152 | Wi-Fi antenna, WLAN 2.4 GHz, 1" fixed right angle | RPSMA male, no cable | RAM 9000 |
| ANT-GW715153 | Wi-Fi antenna, high gain dual band, 7" hinged | RPSMA male, no cable | RAM 9000 |

Cellular Cables & Mounts

- > Industrial-grade accessories
- > Power adapters, cables and mounts



| MODEL NUMBER | PRODUCT | DESCRIPTION | WHERE USED |
|-----------------|-----------------------------------|------------------------------------------------------------------------------|-------------------------------------------------------------------|
| FPSALACadapter | Power Supply AC/DC Adapter Molex | Power supply AC adapter (AC-DC), 4 pin Molex and 6 ft. cable | Cellular routers and RTUs with molex option |
| FPSALACadapter2 | Power Supply AC/DC Adapter Barrel | Power supply AC adapter (AC-DC), AC adapter with 12mm barrel and 6 ft. cable | Cellular routers and RTUs with AC adapter barrel connector option |
| FCATAFUSEAUTO | Cigarette Lighter Adapter | Car adapter 6 ft. 12V DC 3 Amps, 250V fuse automobile adapter | Cellular routers and RTUs with DC power option |
| FCATAFUSECABLE | Direct Current Fused Power Cable | Direct current fused power cable 15ft. DC 2 Amps, 250V fuse power cable | BT-6600, BT-6800, BT-5000 |
| FCASTMXT100 | Serial Cable (RS-232-DB9) | Serial cable (RS-232-DB9), 6 ft. DB9 male to DB9 female | All cellular routers and RTUs with DB9 serial port |
| FCAALUSBMBM | USB Cable | USB cable 3 ft. cable type A male/type B male | BT-5000 |
| FCAALUSBMINI | USB Mini Cable | USB type A male/mini B male cable, 5 pin, black, 6ft. | All cellular routers and RTUs |
| FWH1010FTMolex | I/O Wire Harness | I/O wire harness 10 ft. wire harness 10-pin Molex | BT-5000 |
| DIN-CLIP-1 | DIN-Rail Clip 1" | 1 inch aluminum DIN-rail clip with two screws | BT 6000, SN 6000, RAM 6000 |
| DIN-CLIP-1.5 | DIN-Rail Clip 1.5" | 1.5 inch aluminum DIN-rail clip with three screws | BT 6000, SN 6000, RAM 6000 5 Ethernet port versions |
| DIN-CLIP-2.3 | DIN-Rail Clip 2.3" | 2.3 inch aluminum DIN-rail clip with three screws | RAM 9000 |
| F-CO-ST-4pin | Screw Terminal | Connector terminal, 4-pin plug with screws | BT 6000, SN 6000, RAM 6000 DC input versions |

Cellular Technology

Connecting, monitoring and controlling remote sites is easy when you leverage the power of cellular communication equipment. Cellular RTUs, routers and gateways provide high-speed reliable two-way data communication via 4G LTE or 3G cellular carrier networks. The benefits of deploying a cellular-based remote monitoring and control network include ease of deployment, security and reliability.

Cellular equipment connects new or existing field devices to a secure, high-speed IP network. By connecting I/O, serial, USB, Wi-Fi or Ethernet enabled equipment to a cellular router, organizations can remotely access equipment, monitor status or receive critical notifications when processes are not performing. This real-time communication helps to reduce costs by eliminating site visits and providing more actionable intelligence.

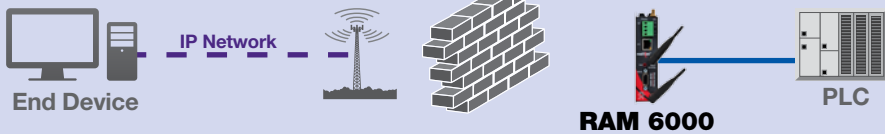
Cellular Modem



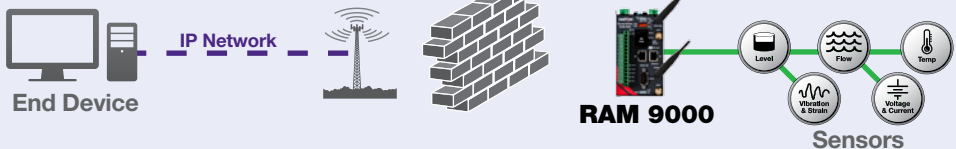
Cellular Gateway



Cellular Router



Cellular RTU



Common Industry Terminology

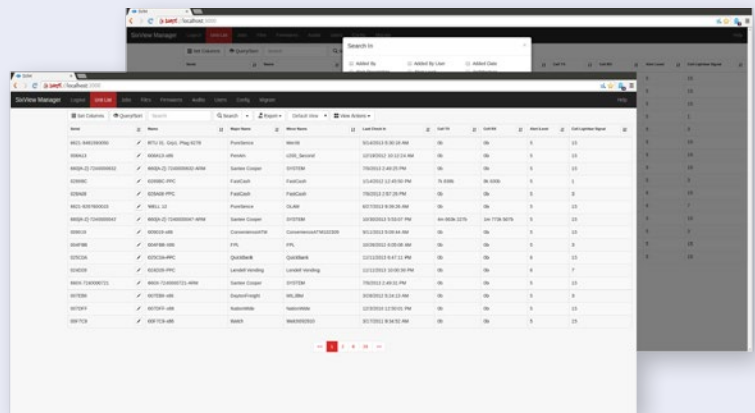
Cellular Modem is a device that transmits a native protocol across a cellular network to another cellular modem which outputs the native protocol.

Cellular Gateway is a device that converts a native protocol to TCP/IP for transmission across a cellular network. Cellular gateways are designed to simply pass data, with limited security capabilities.

Cellular Router is a device that includes cellular gateway functionality along with additional security and packet-level routing capabilities. Cellular routers often include firewalls, Access Control Lists and VPN capabilities to ensure critical data stays protected.

Cellular RTU is a device that encompasses RTU and I/O functionality with a cellular routers capability. Cellular RTUs combine the functionality of multiple devices into a single unit, which reduces remote equipment, power consumption and maintenance costs.

Monitoring cellular devices is easy with Red Lion's SixView Manager software. An intuitive dashboard provides network equipment status to help troubleshoot connectivity issues. Managing and updating devices is quick with built-in mass-update and reporting tools.



A comprehensive portfolio of industrial solutions.
Automation. Ethernet. Cellular M2M.



Industrial solutions, reliable performance and unwavering support.

As the global experts in communication, monitoring and control for industrial automation and networking, Red Lion has been delivering innovative solutions for over forty years. Our automation, Ethernet and cellular M2M technology enables companies worldwide to gain real-time data visibility that drives productivity. Product brands include Red Lion, N-Tron® and Sixnet®. With headquarters in York, Pennsylvania, the company has offices across the Americas, Asia-Pacific and Europe. Red Lion is part of Spectris plc, the productivity-enhancing instrumentation and controls company. For more information, please visit www.redlion.net.

©2015 Red Lion Controls, Inc. All rights reserved. Red Lion, the Red Lion logo, N-Tron and Sixnet are registered trademarks of Red Lion Controls, Inc. All other company and product names are trademarks of their respective owners.



Americas
sales@redlion.net
Asia-Pacific
asia@redlion.net

**Europe, Africa
Middle East**
europe@redlion.net
+1 (717) 767-6511

Connect. Monitor. Control.
www.redlion.net